

# **Welcome to Myron B. Thompson Academy's New Student High School Orientation!**

## **Brief Overview and Topics of Discussion:**

- **FAQ's**
- **Administrative Information**
- **Curriculum, Assessment, and Instruction**
- **What's New at MBTA**
- **Student Support and Tools for Success**
- **State Testing**
- **Message from the Registrar**
- **Q & A**



# Frequently Asked Questions...



# Myron B. Thompson Academy is a Hawaii State Public Charter School.

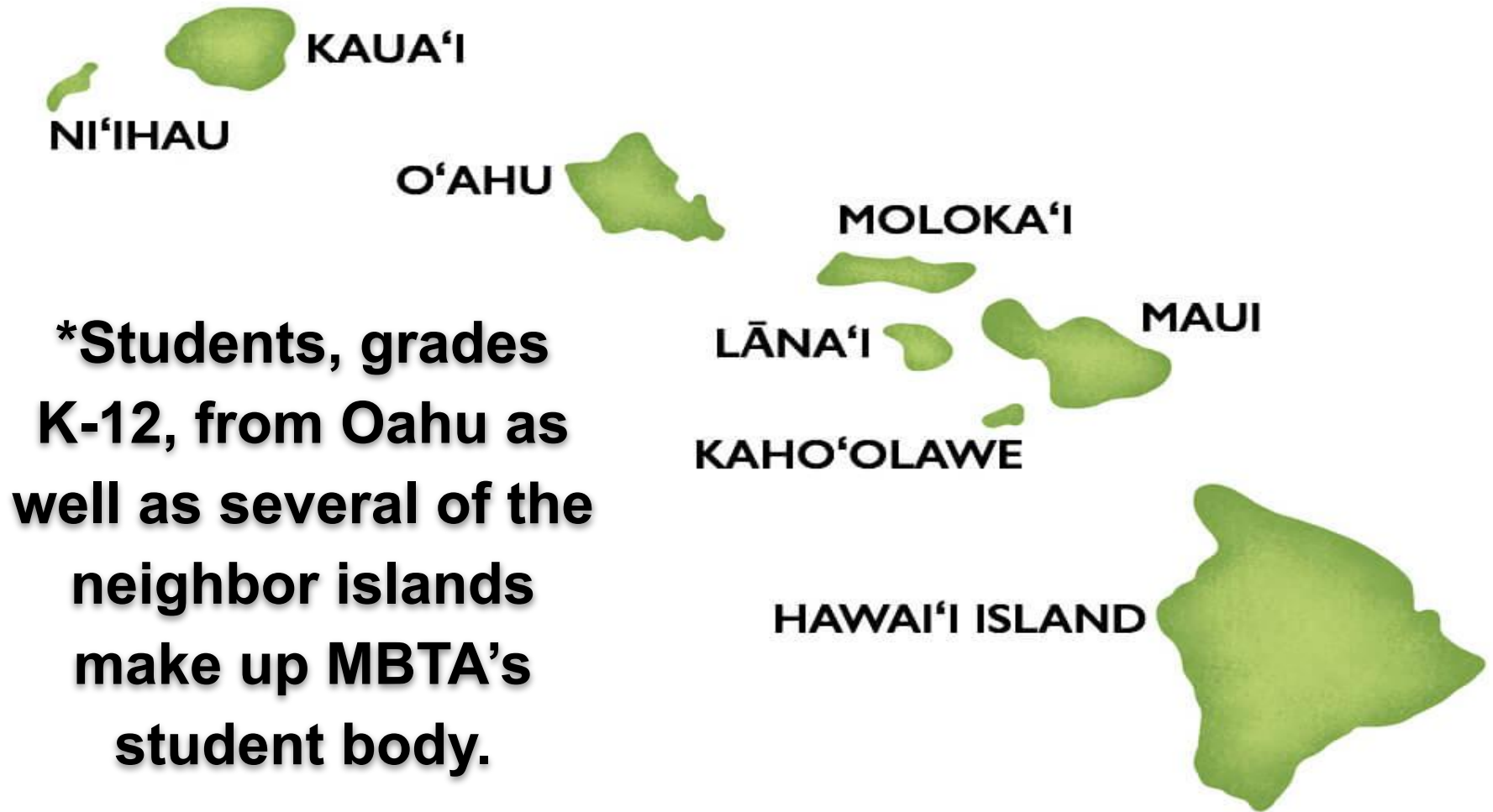


***Fully Accredited by***



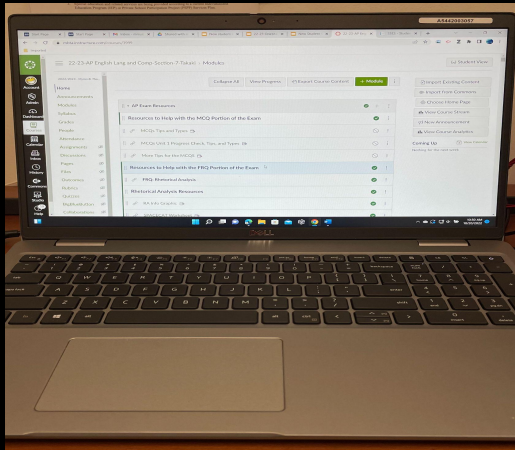
**All credits earned at MBTA are accepted by other  
K-12 public schools, colleges, universities, the  
military and employers.**





**\*Students, grades K-12, from Oahu as well as several of the neighbor islands make up MBTA's student body.**

**MBTA is a hybrid-online Public Charter School.  
Course content and instruction are delivered  
both virtually online and in a face to face  
classroom setting. (Oahu only)**



**ONLINE**



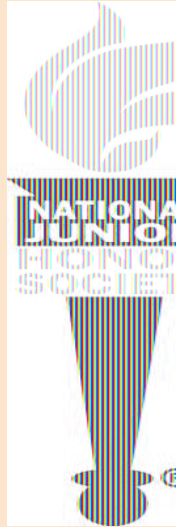
**FACE TO FACE (IN PERSON)**

# High School Athletics

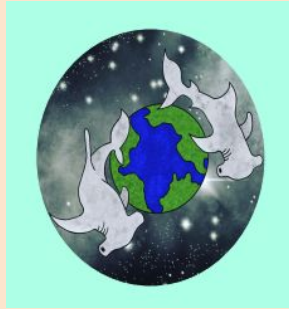
- Students are eligible to try out for a sport at their Geographic DOE school that is not offered at MBTA for that particular school year.
- Contact the Head Coach or school's Athletic Director to clarify any eligibility questions.
- Must maintain academic performance in alignment with DOE guidelines.



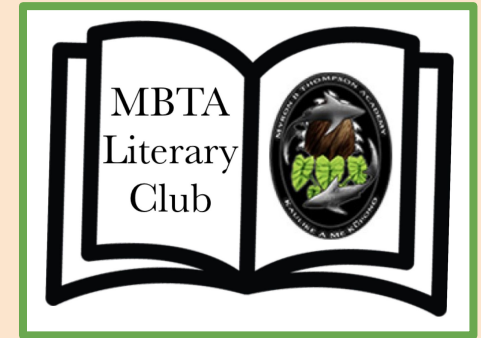
# MYRON B. THOMPSON ACADEMY CLUBS



**RUBIK'S  
CUBE CLUB**



**MBTA CYBER  
SHARKS CLUB**



**MYRON B THOMPSON  
ACADEMY  
MATH TEAM**



**STOCK/FINANCE  
SIMULATION CLUB**

# Administrative Information



# **MBTA DISCIPLINE GUIDELINES**

Title 8  
**Department of Education**

Subtitle 2  
**Education**

Part 1  
**Public Schools**

# **Chapter 19**

Student Misconduct,  
Discipline, School Searches  
and Seizures, Reporting  
Offenses, Police Interviews  
and Arrests, Restitution  
for Vandalism, Complaint  
Procedure and Investigation  
of Discrimination, Harassment  
(Including Sexual Harassment),  
Bullying and/or Retaliation



# Attendance Procedure:

**Students are required to complete the following each school day to be considered in attendance:**



**\*Access all individual CANVAS courses daily**



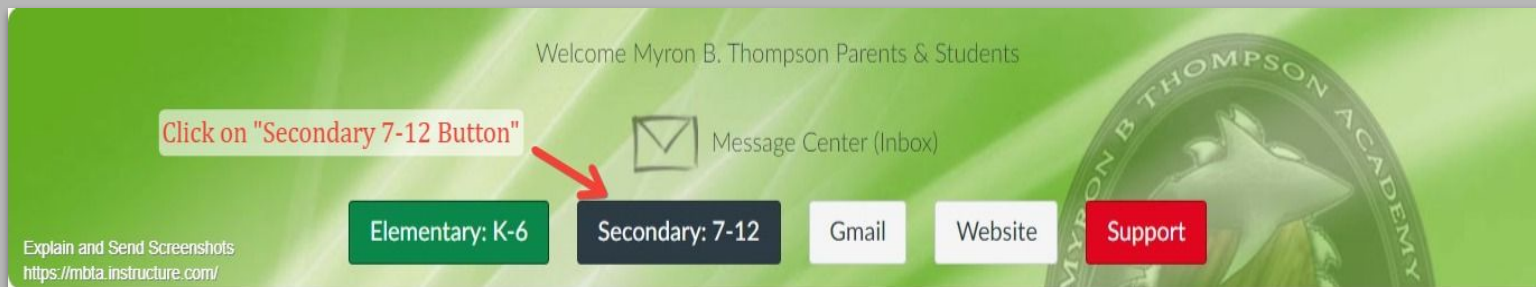
**\*Sign into school gmail account daily**



**\*Respond to teacher emails and notifications daily**

# Student Handbook:

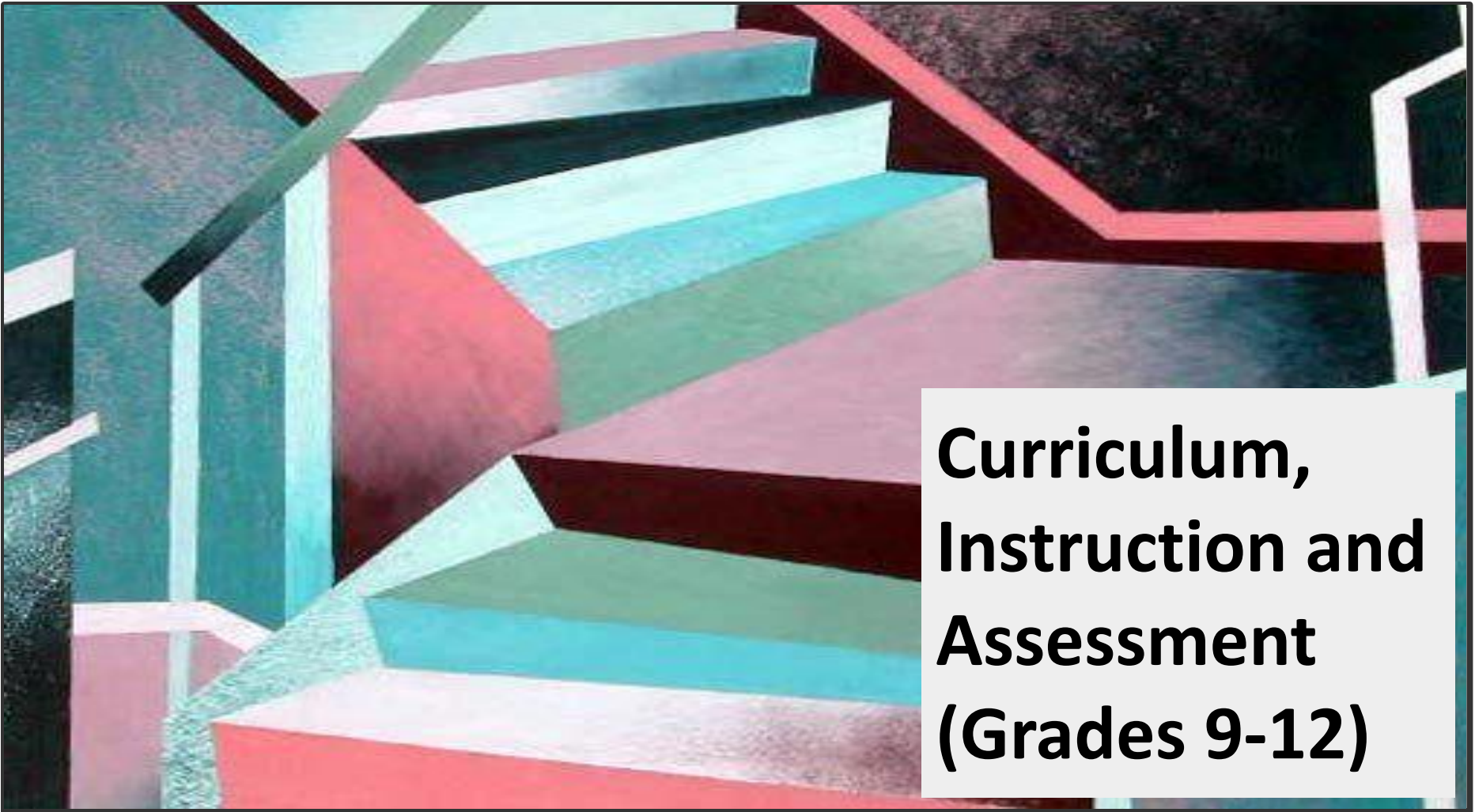
All school policies, procedures, and campus rules are available to students and parents in the [student handbook](#).



Welcome to Myron B. Thompson Academy

Below are the important modules of this course:

1. [Canvas Student Training](#)  
This self-paced training course contains a series of short videos designed to help students learn how to use Canvas. The course can be viewed in any order. Total viewing time for all videos is ~ 35 minutes.  
[Click here to see the list of videos.](#)
2. [Student Handbook](#) ← Click to Access Handbook  
The handbook is required reading for all students.  
[Click here to view the handbook.](#)  
https://mbta.instructure.com/courses/2018

An abstract geometric artwork featuring a series of colorful, three-dimensional steps or planes in shades of red, teal, and white. A prominent red line runs diagonally across the upper right, and a black line runs diagonally across the upper left. The background is a dark, textured black.

# **Curriculum, Instruction and Assessment (Grades 9-12)**

# Curriculum at MBTA

*(what we teach)*

- **Most courses created by teachers with Curriculum Office oversight**
- **Standards-based**
- **Teachers select the content resources (texts, readings, videos, images)**



# Instruction at MBTA

*(how we teach)*

## Teachers plan:

- Learning experiences and assignments
- Sequencing and pacing
- Grouping
- Support





# Instruction at MBTA

*(how we teach)*



## **Virtual**

- Content and assignments
- Virtual Class meetings

## **Face to Face Labs/Meetings**

- Science and Math (other courses as needed)
- Some electives
- Tutoring (may also be virtual)



# Assessment at MBTA

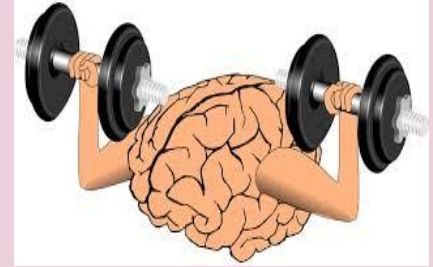
*(how we measure student learning of what has been taught)*

- Evidence-based assessment: Support of answers with specific details, “quotes” from text
- Some fact-based assessments, but generally require an explanation. Fact-based questions can be googled!
- Formative assessment vs. summative assessments and weighted grades.



# Assessment at MBTA...

- Performance assessments
- Face to face exams (math); end of quarter
- Specific teacher feedback on summative assessments
- “Do over” as recommended by teacher—**only on major assignments/assessments**. Must use feedback in final submission



## Evidence-Based Assessment

- \*Interpretation
- \*Critical Thinking
- \*Taking a Position
- \*Returning to Text for support

### Night, Chapter 3-4 Title Assignment

A good chapter title is short and descriptive. It gives an inkling/hint of what the chapter is about. Elie Wiesel did not use chapter titles nor did he use chapter numbers in *Night*.

As you read each chapter, clearly identify the chapter and the page numbers, followed by your creative, capitalized title (each title cannot be more than 5 words in length) and then a short explanation for that particular title. Follow the format provided.

**Chapter 3: Page numbers 29-46**

**Title:**

**Explanation:**



# Assessment at MBTA:Teacher Feedback

“This is a fair start, but there's room for improvement. Generally speaking, you need to elaborate on your responses - explain them further, maybe provide examples and/or evidence such as direct quotes from the reading. You can make changes and resubmit to improve if you'd like to. Let me know if you have questions and keep me updated on your progress.”



# Most Secondary Courses are Accelerated...

- Condensed time frame (1 semester vs. year-long for Core classes, with exception of math and foreign language)
- Faster-paced
- Rigorous Curriculum
- 9th graders take two science courses, 10th graders take two social social studies/history courses, while 11th graders take two English classes



# Virtual Class (VC)

*Teacher and Students meet together online in a group of 15-20. Cameras and microphones turned on.*

- **MANDATORY**
- Graded
- Discussion
- Assignments completed in advance





# Face to Face Class (F2F) - Oahu Only



- Mandatory
- Twice a month
- Math and Science
- English & Soc. Studies sometimes



# Agenda

## Physical Science A: 8/22-8/26

Monday	Tuesday	Wednesday	Thursday	Friday
<b>Today's focus:</b> ›VC @ 11	<b>Today's focus:</b> ›Complete the graphing practice 1, and ask Miss Landry if you have any questions!	<b>Today's focus:</b> ›Write a draft of your results and discussion based on VC discussion and yesterday's graphing practice	<b>Today's focus:</b> ›View Miss Landry's feedback video on yesterday's results and discussion draft ›Edit your first draft and generate a second draft	<b>Today's focus:</b> ›F2F @ 10:45
<b>To submit:</b> ›VC Assignment	<b>To submit:</b> ›Graphing practice 1	<b>To submit:</b> ›Draft of Results and Discussion	<b>To submit:</b> ›2nd Draft of Results and Discussion	<b>To submit:</b> ›

# AGENDA: Week 8: English IA

## Monday September 19

- *Night Ch 3-4 Study Guide (Due: today by 11:59p)*

## Tuesday September 20

- Complete *Night Ch. 3-4 Title Assignment BEFORE VC*
- Begin *Night Ch. 3-4 Craft and Structure (Due: tomorrow by 11:59p)*

## Wednesday September 21

### Mandatory VC

- Submit *Night Ch. 3-4 Craft and Structure (Due: tonight by 11:59p)*

## Thursday September 22

- Read *Night Ch. 5-6*

## Friday September 24

- Complete *Night Ch. 5-6 Study Guide (Due: tonight by 11:59p)*



# What's New at MBTA...





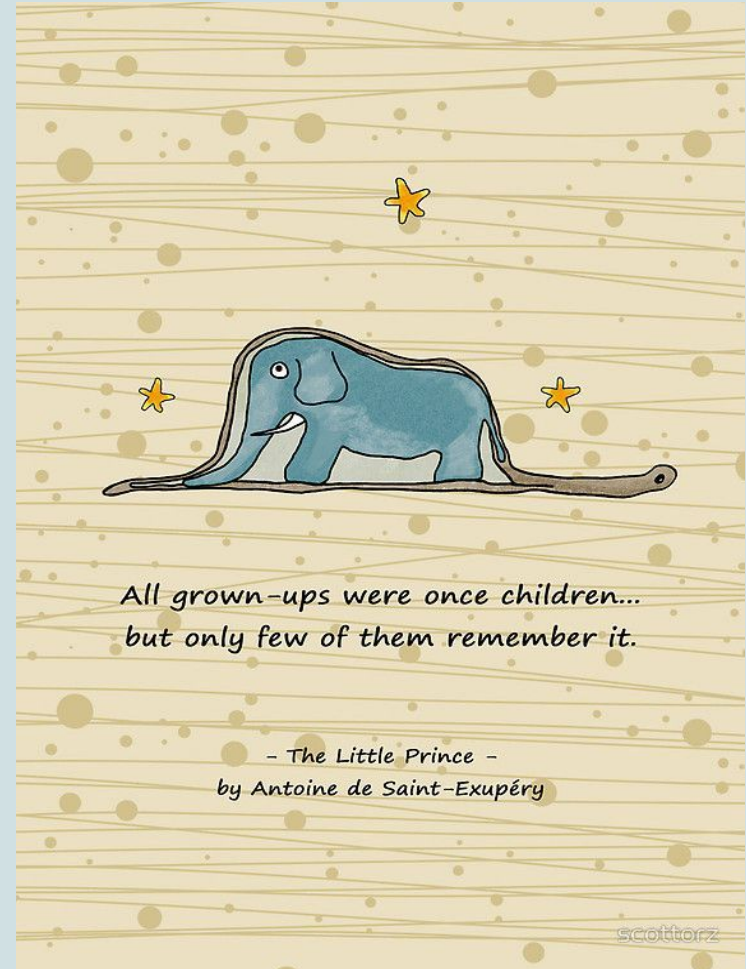


**Senior Capstone Institutes— Specialization**

# Senior Capstone: Goals

**\*Ensure entry into post-secondary education or the world of work with solid academic foundation and marketable knowledge and skills**

**\*Require critical and creative thinking, oral and written communication, problem-solving, and commitment to a long-term project**







**May also take AP courses and electives, in addition to the Institute courses.**

**Quarter 1: Creating a research question or  
Short story  
Researching  
Ethics  
Search for Mentorships**

**Quarters 2-3: Field Work**

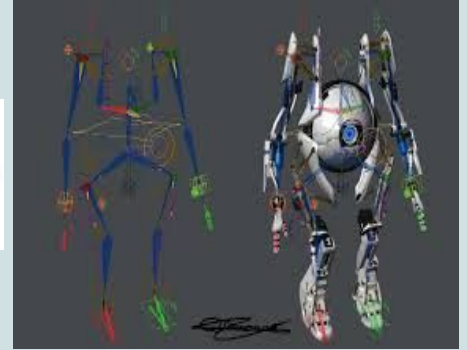
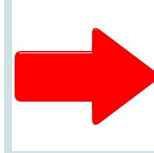
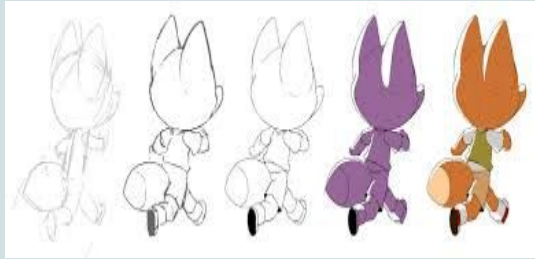
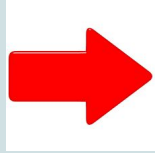
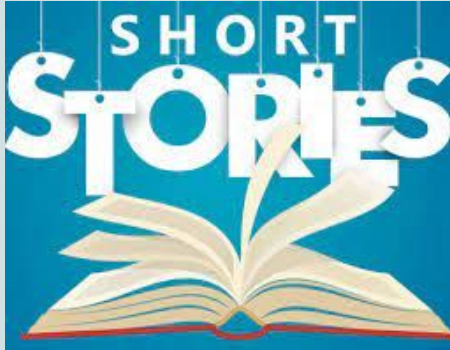
**Quarter 4: Oral communication  
Delivery to appropriate audience**

# The Institutes...

**STEM**: Using Science To Help  
our Community—Today and  
Tomorrow



# The Institutes...



**ART/LANGUAGE ARTS: From Short Story to Picture Book to Animation**

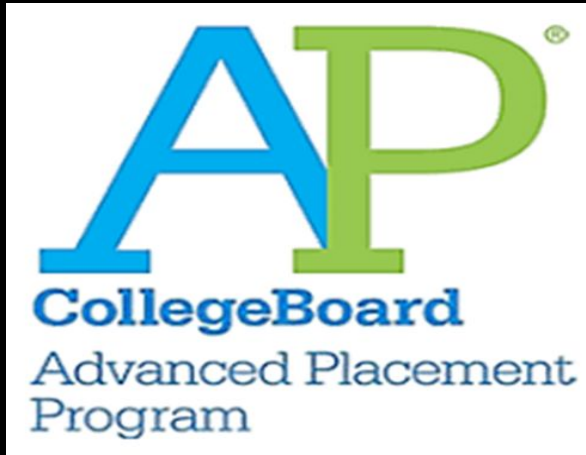
# The Institutes ...

## AP Institute...AP Seminar

- AP Statistics
- AP Calculus
- AP US History
- AP Physics
- AP Language and Composition
- AP Literature and Composition



# Academic opportunities for High School students at MBTA.



**AP COURSES (Grades 10-12)**



**Running Start (Grades 11-12)**



# Hawai'i Pacific University (HPU)

Dual Credit (D/C) Courses

Associate of Arts (AA) General Studies Degree

**Expanding Opportunities for College-Level Learning**



# Student Support...



# Support Staff:

**Connie Nakasone- School Counselor, Grades 9-12**

- Personal, Emotional, and Academic

**Jacey Waterhouse- College and Career Counselor**

- College/Post High School

**Noelle Tavares-Sumiye- Student Services Coordinator**

- Pre-intervention and referrals

# Instructional Support:

Teachers are available during school hours (M-F, 8AM-3PM)

- by phone,
- by email,
- by chat,
- individual tutoring or
- small group tutoring





## COLLEGE & CAREER READINESS

- \*Career & Academic Planning (CAP): grades 9-11
- \*Personal Transition Plan (PTP): grade 12
- \*Maia Learning Portal: individualized profile, career and post-secondary program exploration, and portfolio application process
- \*College Visits, Guest Lectures, Field Trips, and Workshops





#### **Career and Academic Planning (CAP) 9: Areas of focus**

- Self-Assessment and Discovery
- Time Management
- Goal Setting
- Career Research
- Personal Mission Statement, etc.

#### **Career and Academic Planning (CAP) 10: Areas of focus**

- Pre-ACT prep
- Determining specific careers of interest
- Career Action Plan
- College Research
- Resume development, etc.

#### **Career and Academic Planning (CAP) 11: Areas of focus**

- ACT prep
- Determining "College Fit"
- Developing college list
- Admissions Options
- Requesting Letter of Recommendations, etc.

## **Personal Transition Plan (PTP) Grade 12: Areas of Focus**

- **College Comparisons**
- **Development and evaluation of application essays**
- **Brag sheet for letters of recommendation**
- **FAFSA completion**
- **Creating/Maintaining college accounts: ACT, College Board, Common App**
- **Research Scholarship Opportunities**
- **College/Job Interview prep**
- **Financial Aide Research**
- **Personal Budgeting, etc.**



# How can parents provide academic support for their child?



# \*Review Course Gradebooks Regularly (1-2 times per week)

Name	Due	Status	Score	Out of
<ul style="list-style-type: none"> <li>Night, Ch. 7-9 Title Assignment Formative Assignments and Assessments</li> </ul>	Oct 11 by 11:59pm		5	5
<ul style="list-style-type: none"> <li>Night Ch. 7-9 Study Guide (graphic organizer) Formative Assignments and Assessments</li> </ul>	Oct 12 by 11:59pm			10
<ul style="list-style-type: none"> <li>Night Ch. 7-9 Study Guide (short essay) Formative Assignments and Assessments</li> </ul>	Oct 12 by 11:59pm		9.5	10
<ul style="list-style-type: none"> <li>Night, Ch. 7-9 Study Guide Formative Assignments and Assessments</li> </ul>	Oct 12 by 11:59pm			10
<ul style="list-style-type: none"> <li>Reflective Essay Summative Assignments and Assessments</li> </ul>	Oct 14 by 11:59pm		0	20
<ul style="list-style-type: none"> <li>Week 1 SBAC Practice Formative Assignments and Assessments</li> </ul>	Oct 14 by 11:59pm		0	2 <span>Read Teacher Comment</span>
<ul style="list-style-type: none"> <li>Hip Hop &amp; Shakespeare Assignment Formative Assignments and Assessments</li> </ul>	Oct 17 by 11:59pm	LATE	7	7
<ul style="list-style-type: none"> <li>Sonnet #18 Assignment Formative Assignments and Assessments</li> </ul>	Oct 18 by 11:59pm		10	10

<https://moodle.instructure.com/course/9347/grades>

**\*Check and respond to teacher emails daily**



**\*Provide a quiet workspace, with minimal distractions**



**\*Develop and maintain effective communication with teachers**



# Tips for Student...



# Develop and strengthen the following skills:



- Self-Motivation
- Organization



- Time Management
- Communication



# Types of Organizational Tools...



# When Communicating with Teachers...



**...BE SPECIFIC.**

\*Saves time and  
reduces  
stress/anxiety.

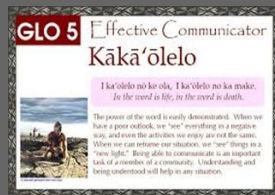
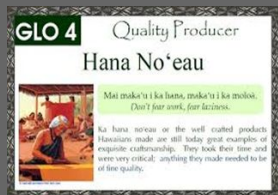
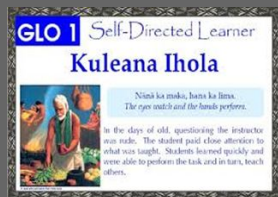


# When Completing Assignments/Exams/Projects...



# ...CAREFULLY

# Work towards developing a routine that includes...

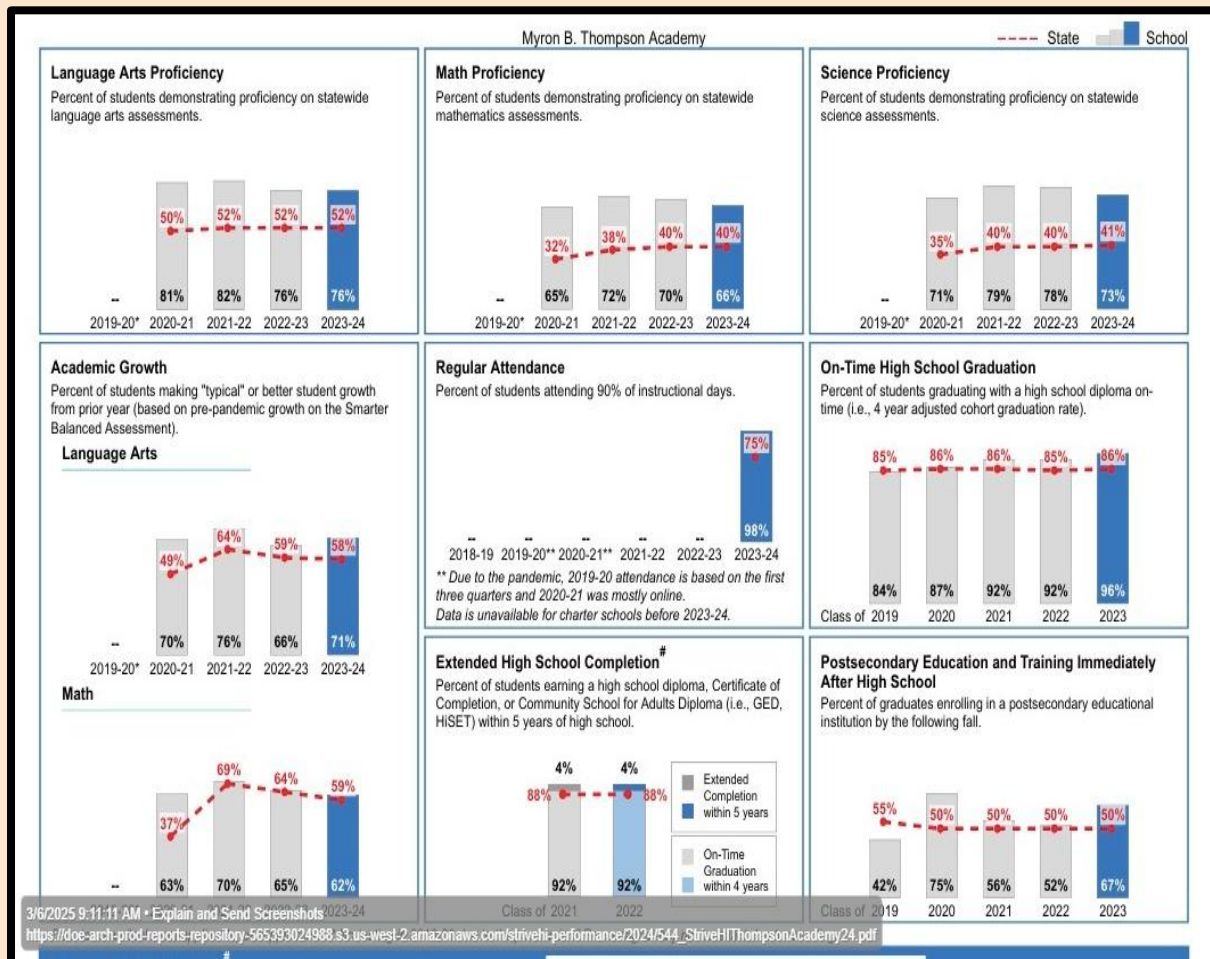


- Checking each course's weekly plan at the start of each week (Monday) and plan your week accordingly.
- Checking your school issued email (@ethompson.org) frequently during each school day.
- Responding to teacher emails daily.
- Attending ALL your mandatory scheduled Virtual Online and Face to Face classes.
- Submitting your classwork on time
- Reading your teacher's feedback
- Resubmitting assignments when appropriate
- Equally important, asking for help immediately...Do Not Wait.

# State Testing Information...

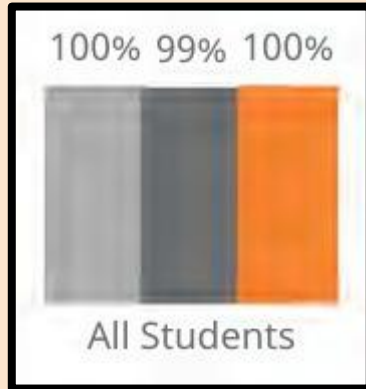


**MBTA students**  
consistently  
score  
**well above**  
the state level of  
proficiency in  
**English Language**  
**Arts,**  
**Mathematics, and**  
**Science**

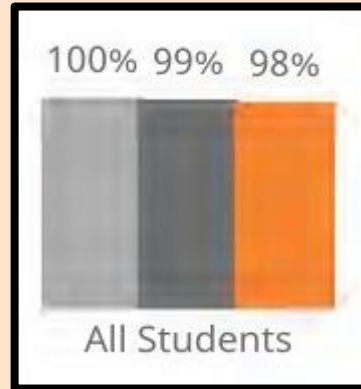


# Participation - Three Year Comparison

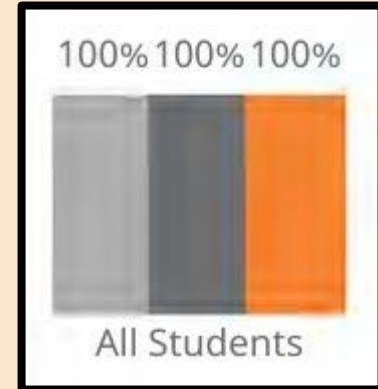
## Language Arts



## Math



## Science



- ➔ Results of last three years
- ➔ Attendance at standardized tests is required
- ➔ Spring testing dates are set in the Fall
- ➔ No travel during testing



# Grades 9 - 12 Required Testing - Hawai'i Statewide Assessment and ACT

- Grade 11: Smarter Balanced Assessments in English Language Arts and Math



- Grades 9 and 10: Pre-ACT
- Grade 11: ACT (**All grade 11 students must complete an ACT Prep course**)
- All students enrolled in Algebra 1, Algebra 2, and Biology: End of Course Exams

# From the Registrar's Office...



# Student Information System:

## Powerschool SIS-

Here you will be able to access your child's progress and final grades. Teachers will update grades in Powerschool every 2nd, 5th, and 7th week of each grading term. Final quarter/semester grades are posted the week students return from breaks. You will receive a Parent Username and Password once your child has been enrolled with MBTA.



# Learning Management System:



## CANVAS LMS-

This will be the Learning Management System (LMS) utilized for this school year. Canvas will be the source of the student's course content, assignments, and assessments, along with links to other supports such as Gmail, ZOOM (Web Conferencing), etc.

# What Does Canvas



?

URL	Date
<a href="https://mbta.instructure.com/calendar">https://mbta.instructure.com/calendar</a>	Oct 26 at 10:46am
<a href="https://mbta.instructure.com/">https://mbta.instructure.com/</a>	Oct 26 at 10:46am
<a href="https://mbta.instructure.com/api/v1/canvadoc_session?blob=%7B%22user_id%22%3A313600000000...">https://mbta.instructure.com/api/v1/canvadoc_session?blob=%7B%22user_id%22%3A313600000000...</a>	Oct 26 at 8:35am
<a href="https://mbta.instructure.com/courses/3900/files/1361790/file_preview?annotate=0&amp;verifie...">https://mbta.instructure.com/courses/3900/files/1361790/file_preview?annotate=0&amp;verifie...</a>	Oct 26 at 8:35am
<a href="https://mbta.instructure.com/courses/3900/assignments/129805?module_item_id=276298">https://mbta.instructure.com/courses/3900/assignments/129805?module_item_id=276298</a>	Oct 26 at 8:35am
<a href="https://mbta.instructure.com/courses/3900/modules">https://mbta.instructure.com/courses/3900/modules</a>	Oct 26 at 8:34am





# DOCUMENTS SENT ELECTRONICALLY...

\*Student course schedules- distributed in Mid-July

\*Student Progress Reports- every 2nd, 5th, and 7th week of each grading term

\*Quarterly Report Card- after the completion of each grading term

\*School announcements, surveys, etc.



**+MAKE SURE WE HAVE A VALID EMAIL ADDRESS**

# New Student Welcome Packet

Located in demo CANVAS account and will include the following:

1. Preliminary School Calendar (subject to change)
2. MBTA Secondary Phone/Email Contact List
3. Online systems overviews and parent tips
4. Graduation requirements
5. Notification of Travel form
6. Program Change form



## Graduation Requirements: Effective starting w/ Class of 2021

COURSE REQUIREMENTS-	HAWAII HIGH SCHOOL DIPLOMA-
English Language Arts	4 Credits
Social Studies	4 Credits
Mathematics	3 Credits
Science	3 Credits
Specialized Electives Two credits in one of the specified programs of study: *World Language (WL) *Fine Arts (FA) *Career and Technical Education (CTE)	2 Credits
Physical Education	1 Credit
Health	0.5 Credit
Personal Transition Plan (PTP)	0.5 Credit
General Electives	5 Credits
Computer Elective Course (IT / CS)	1 Credit
TOTAL:	24 Credits

# Technical Support

**All MBTA Secondary students (grades 7-12) will be issued a Windows laptop for school work purposes only.**



**Support Hours: Monday – Friday, Room 210**

**8:00 AM – 12:00 PM (walk-in)**

**12:00 PM – 4:00 PM (schedule an appointment)**



**Computers will be distributed to Oahu and Neighbor Island students in mid-July. Dates/times for in person pick up will be emailed.**

**Neighbor Island students- computers will be mailed to you via FedEx using the mailing address provided.**



**Basic computer operations training will be provided at the time of computer pick up. Neighbor Island students- please contact the Technical Department for online training opportunities.**



**If you experience any computer hardware and/or software issues...**

**Contact one of the following Technical Personnel:**



**>Mr. Baguio: 441-8087**

**>Ms. Hioki: 441-8088**



**\*We highly recommend using the school issued computer.**

**\*All necessary software and plug-ins are already pre-loaded.**



# What's Next...



# STUDENT TRAINING



- New students will participate in a one week CANVAS training course.
- Course will run from July 28, 2025 to August 1, 2025.
- Training will cover CANVAS course navigation and tasks.
- Login information will be distributed via email (please check your school issued gmail account).
- First day of school is August 4, 2025.

# Meet and Greet Event



- \*Second week of new school year, all day event (Scheduled for August 11, 2025)
- \*Neighbor Island students will be flown in (airfare cost will be reimbursed)
- \*Opportunity for students to meet their teachers and peers
- \*Participate in various group activities
- \*Lunch will be provided
- \***Information regarding event will be sent via email as soon as it is available**

